

MARKET STREET CORPORATE CENTER

UP TO
±8,772 SF
AVAILABLE

OFFICE SPACE FOR LEASE

2300 MARKET STREET
RIVERSIDE, CA 92501

 LEE &
ASSOCIATES
COMMERCIAL REAL ESTATE SERVICES

OFFICE SPACE FOR LEASE

2300 MARKET STREET
RIVERSIDE, CA 92501

MARKET STREET CORPORATE CENTER



THOMAS P. PIERIK, SIOR
Senior Vice President
951.276.3610
tpierik@lee-associates.com
DRE #00982027



LEE & ASSOCIATES
COMMERCIAL REAL ESTATE SERVICES



DAVID MUDGE, CCIM, SIOR
Senior Vice President
951.276.3611
dmudge@lee-associates.com
DRE #01070762

No warranty or representation has been made to the accuracy of the foregoing information. Terms of sale or lease and availability are subject to change or withdrawal without notice. Lee & Associates Commercial Real Estate Services, Inc. - Riverside. 4193 Flat Rock Drive, Suite 100 - Riverside, CA 92505
Corporate ID# 01048055

PROPERTY

- ▶ **Market Street Corporate Center is a 133,577-square-foot Class A office project featuring one (1) 6,290-square-foot medical/office building and two (2) 3-story, ±63,500-square-foot professional office buildings. The 3-story buildings boast a 2-story atrium lobby, attractive finishes and flexible floorplates. The buildings are equipped with state-of-the-art HVAC and security systems.**
- ▶ **Market Street Corporate Center is located adjacent to the on/off ramp to the 60 freeway with great visibility at the 60/91/215 freeway interchange, providing direct commutes to/from Los Angeles, Orange, and San Diego Counties.**
- ▶ **Market Street Corporate Center is in immediate proximity to Riverside's downtown civic center with numerous restaurants, retail amenities, hotels and business services. The project offers free surface parking at a ratio of 4:1,000 - a rare and desirable benefit for a professional office location in the downtown core.**

AVAILABLE SUITES

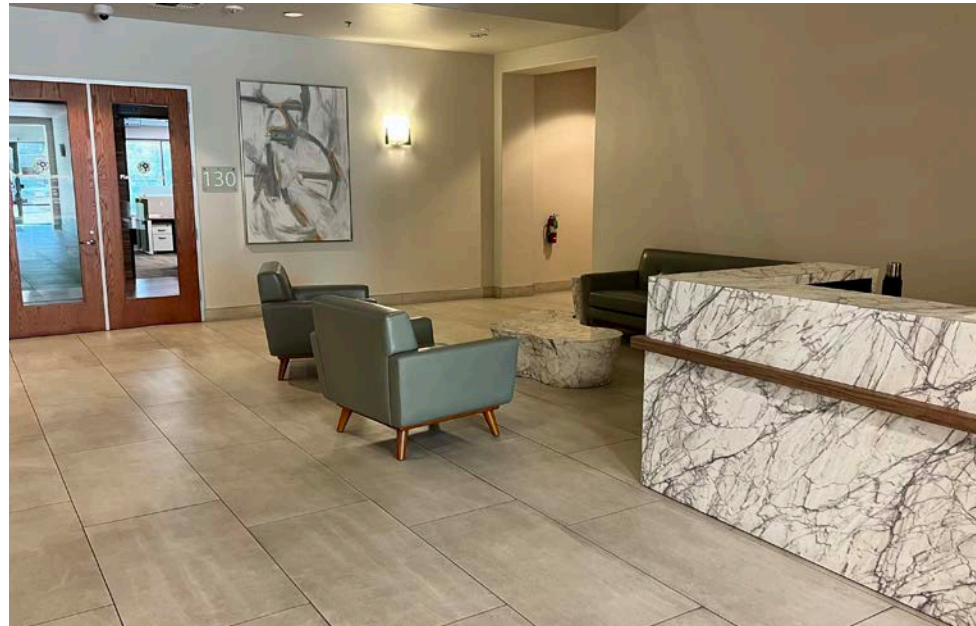
Suite Number	Size SF	Lease Rate	Build-Out
150*	8,772 SF	\$2.30 PSF FSG	7 Private Offices, Open Area, Conference Room, Breakroom, Training Room Available April 1, 2023

* Divisible to ±4,000 SF

PROPERTY PHOTOS



INTERIOR PHOTOS

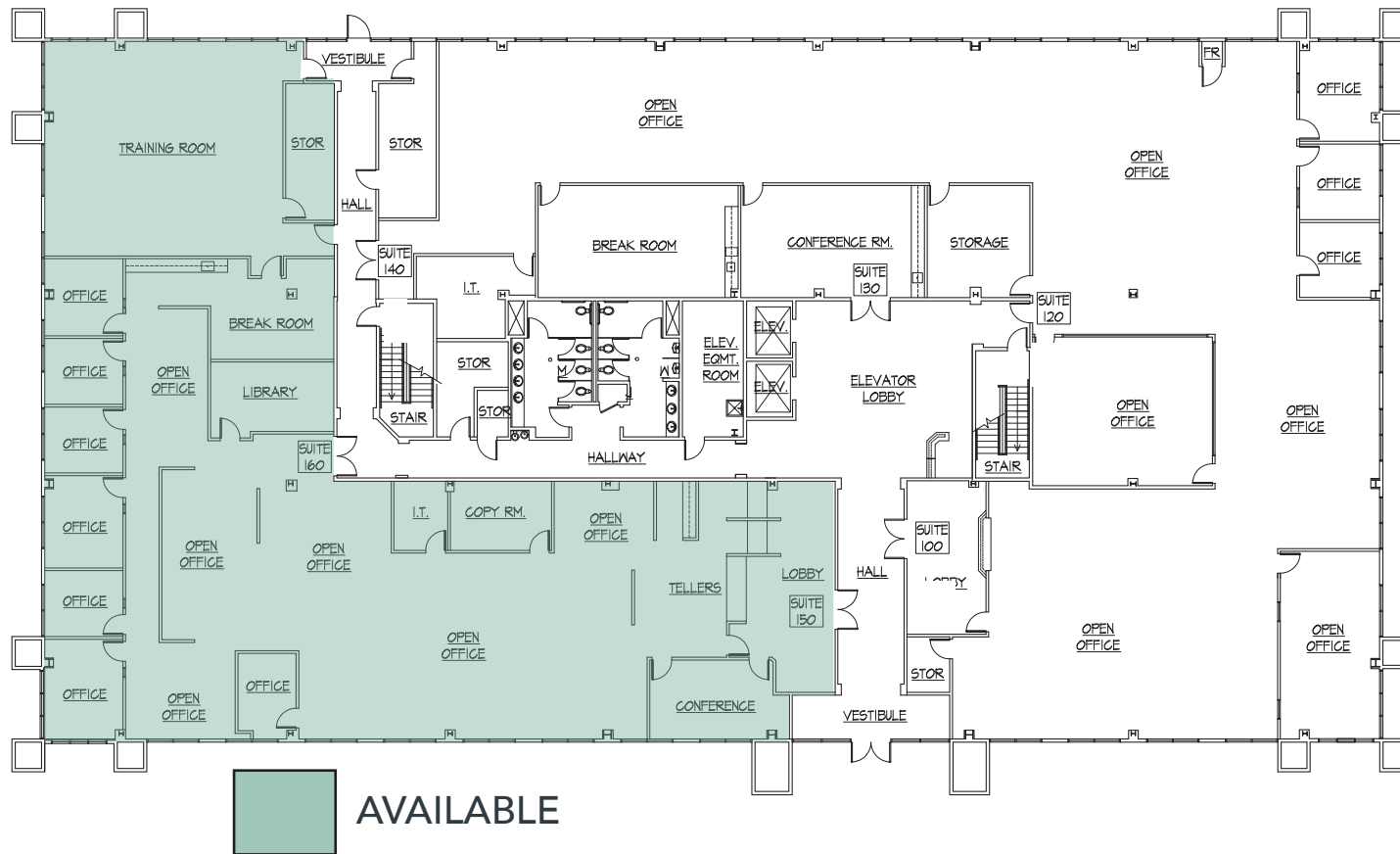


FIRST FLOOR



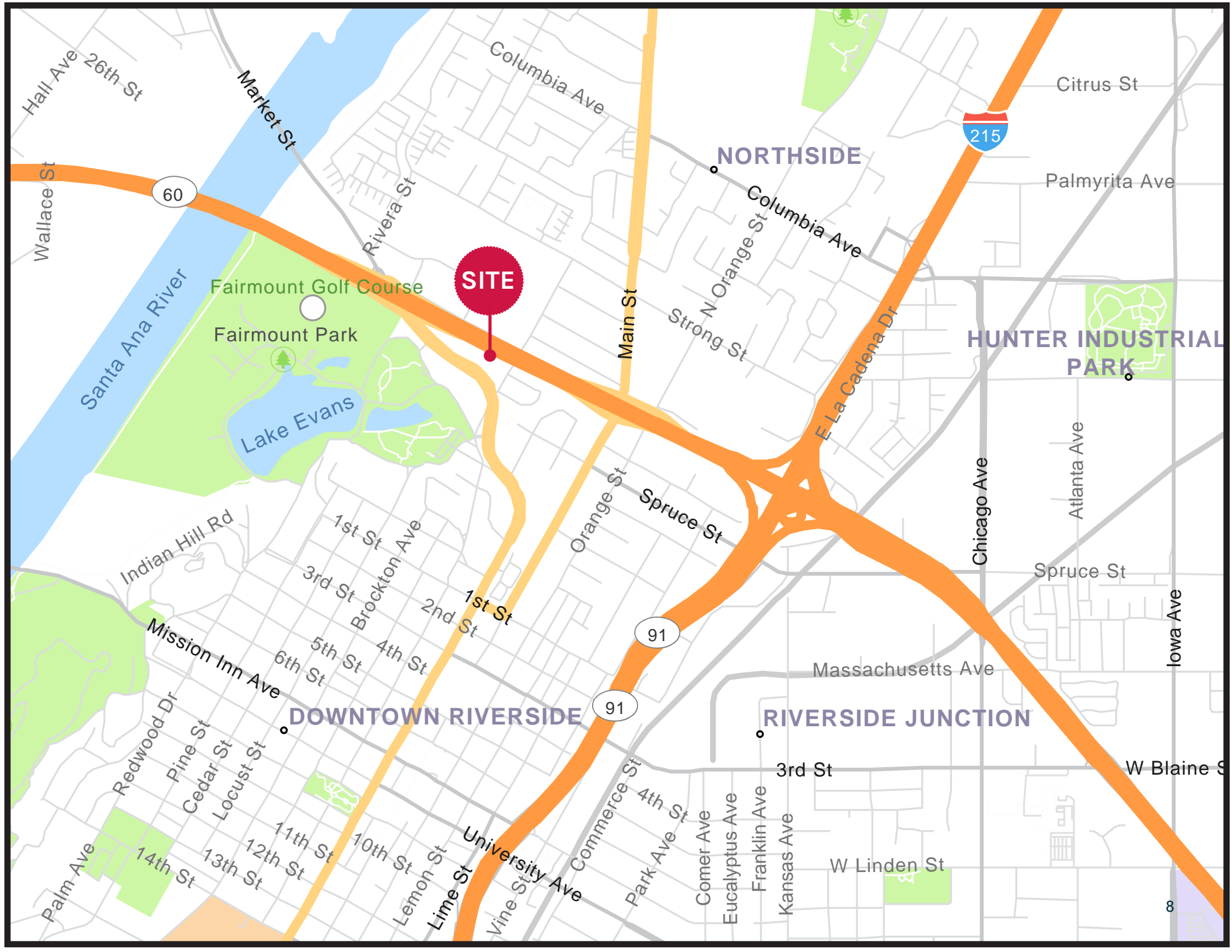
MARKET STREET
CORPORATE CENTER

SUITE 150





Market Street to Downtown Center 1 mile





MARKET STREET
**CORPORATE
CENTER**
2300 MARKET STREET
RIVERSIDE, CA 92501

MARKET STREET CORPORATE CENTER

2280 MARKET STREET, RIVERSIDE, CA 92501



THOMAS P. PIERIK, SIOR

Senior Vice President

951.276.3610

tpierik@lee-associates.com

DRE #00982027

DAVID MUDGE, CCIM, SIOR

Senior Vice President

951.276.3611

dmudge@lee-associates.com

DRE #01070762



**LEE &
ASSOCIATES**

COMMERCIAL REAL ESTATE SERVICES

No warranty or representation has been made to the accuracy of the foregoing information. Terms of sale or lease and availability are subject to change or withdrawal without notice.

Lee & Associates Commercial Real Estate Services, Inc. - Riverside, 4193 Flat Rock Drive, Suite 100, Riverside, CA 92505

Corporate ID# 01048055