

FOR LEASE

MOVE-IN-READY PROFESSIONAL SUITES

HRBC/INSURANCE

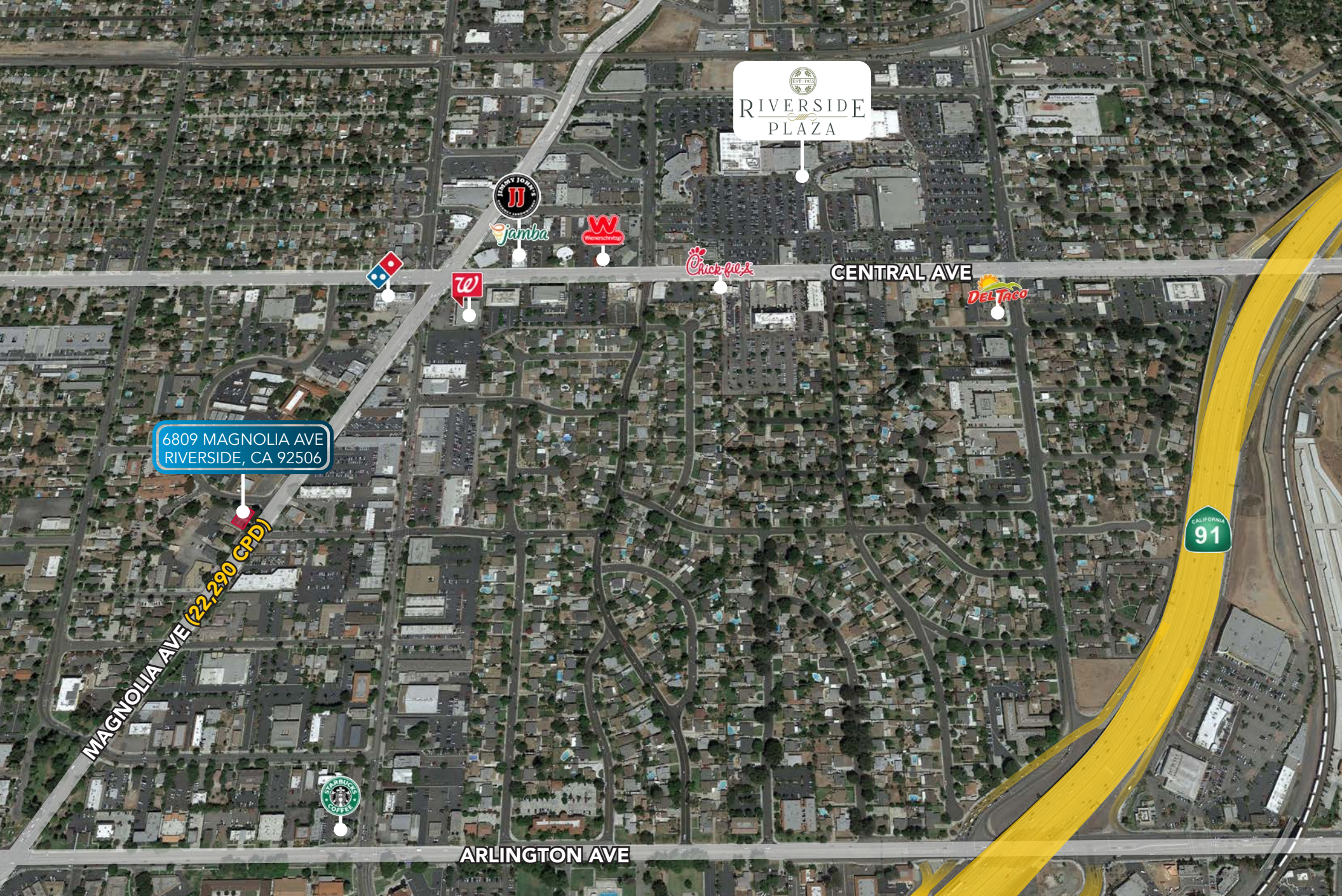
**6809 MAGNOLIA AVE
RIVERSIDE, CA 92506**

PROPERTY HIGHLIGHTS

- Lease Rate: \$1.85 FSG
- Move-in-Ready Professional Office Suites
- Month-to-Month Tenants Considered
- Two (2) Parking Spaces Per Unit; Additional Street Parking Available
- Close Proximity to Riverside Plaza Amenities
- Easy Access To The 91 Freeway



UNIT	SIZE (±SF)	DESCRIPTION	VIRTUAL TOUR
A	844 SF	2 Private Offices, Conference Room, and Reception	CLICK HERE
D	675 SF	2 Private Offices and Bullpen	CLICK HERE



6809 MAGNOLIA AVE
RIVERSIDE, CA 92506

RIVERSIDE
PLAZA

CENTRAL AVE

ARLINGTON AVE

CALIFORNIA
91



COMMERCIAL REAL ESTATE SERVICES

David Mudge, SIOR | 951.276.3611 | DRE#: 01070762 | dmudge@leeriverside.com
Lindsay Mingee | 951.276.3622 | DRE#: 01920658 | lmingee@leeriverside.com

No warranty or representation has been made to the accuracy of the foregoing information. Terms of sale or lease and availability are subject to change or withdrawal without notice. Lee & Associates Commercial Real Estate Services, Inc. - Riverside, 3240 Mission Inn Ave., Riverside, CA 92507, 951.276.3600, www.lee-associates.com

6809 MAGNOLIA AVE
RIVERSIDE, CA 92506